



LiSmart-855/1206

USER MANUAL

This manual contains important safety instruction. Keep this manual handy for future reference

INSTALLATION AND OPERATION

Before installing, please read and understand the following instruction:
Inspect the following items inside the box

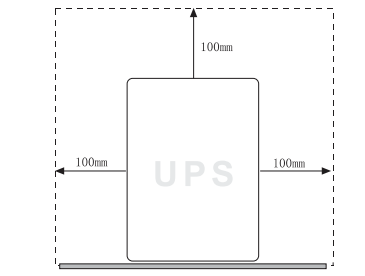
- User manual
- UPS
- Mains cord

UNPACKING AND INSPECTION

Examine the packing carton for damage. Notify your dealer immediately if damage is observed. Store the packing in a safe place for possible future trans-shipment of the UPS.

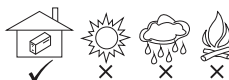
PLACE THE UPS

Position the UPS on a sturdy, dry surface in a well ventilation area away from direct sources of heat. Leave at least 100 mm clearance all around the UPS to provide adequate ventilation.



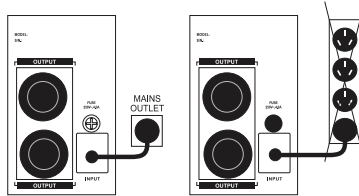
The UPS is intended for indoor use only. Although your UPS is very rugged, its internal components are not sealed from environment. Kindly note the following.

- Avoid direct sunlight.
- Avoid excessive heat.
- Avoid excessive humidity or liquids.
- Avoid excessive dust



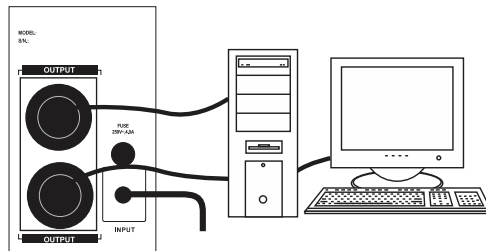
CONNECT UPS TO POWER

Connect the power cord, to a verified grounded 3 wire receptacle. Do not power the UPS using a surge suppressor or power strip. Switch the utility power ON.

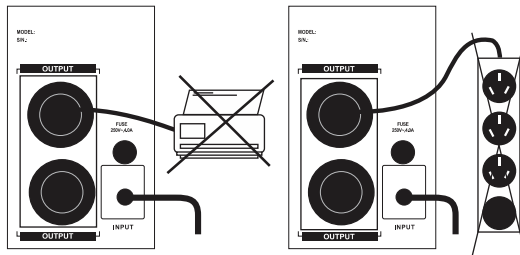


CONNECT EQUIPMENT TO UPS

Now connect your load to be protected (computer, monitor, etc.) to the AC output receptacles at the rear of the UPS



- do not connect a laser printer or any non-computer peripherals to UPS outlets
- do not connect a surge suppressor, power strip, or extension cord to the UPS outlet.



Enable the UPS by turning on the power ON/OFF switch, which is situated on the front panel.

The UPS is now ready to use. Switch on your equipment and you are ready to function.

Safety notice*

The product contains voltage, which are potentially hazardous. Qualified service personnel should perform all repairs.

Do not try to open the cover and the service the system yourself, no user serviceable parts inside.

Refer servicing to qualified service personnel only. The product has its own internal energy source (battery). The output receptacles may be live even when the product it's no connected to an AC supply.

Warning

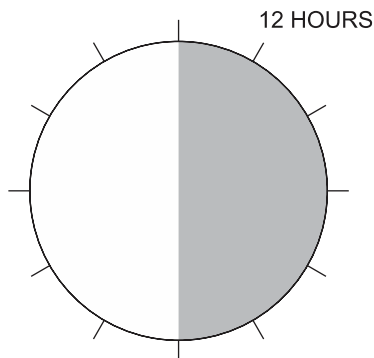
On case of fire risky, please change the fuse with the same kind and same rate.

The product is intended for indoor use only. Kindly note to avoid excessive heat, dust, humidity or liquids.

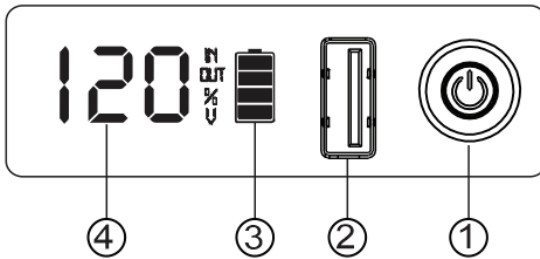
BATTERY MAINTENANCE/ BATTERY CHARGING

After shipment from the factory the battery needs recharging. If not used for a long period of time, the battery will start self-discharging, which may result in a short service life of the battery or may even cause damage to it during warranty period. Care should also be taken to avoid excessive temperature around the UPS, which could also result in reducing service life of the battery. The achieve maximum service life from the battery the above instruction should be followed.

The UPS battery charge whenever the UPS is connected to utility power & is switched ON. It typically requires more than 12 hours to charge fully. Operating runtime is reduces until the battery is fully charger.



UPS INDICATORS AND CONTROLS



1. - ON/ OFF switch
2. - USB output (5V/2A)
3. - Battery capacity
4. - The output voltage is displayed by default.

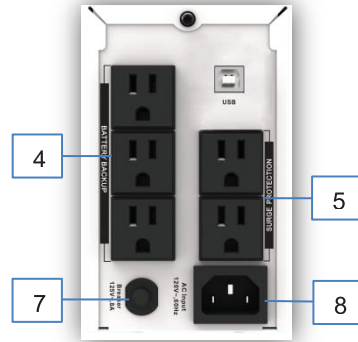
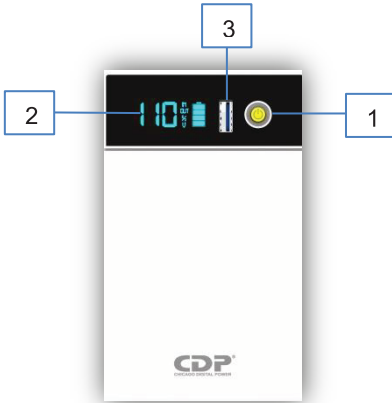
Press the ON/OFF buttons to switch the display for the following parameters in turn:

- Load percentage
- Load level (included "1.2.3" three levels, the higher the level, the greater the load)
- Main input voltage

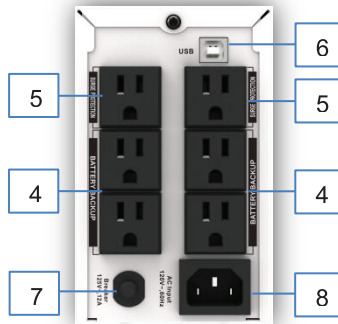
SPECIFICATIONS

Model	LiSmart-855	LiSmart-1206
Capacity	500VA/250W	800VA/500W
Input voltage	85-150VCA	
Output voltage	102-132VCA	
Output wave form	PMW/DC	
Outlet:Nema5-15R	3 back up + 2 surge only	4 back up + 2 surge only
Output frequency	50Hz o 60Hz	
Battery rating	12.8/7.2WH LiFePO4	25.6V/144WH LiFePO4
Backup time	3-33 minutes	3-63 minutes
LED indicator	Input and Output voltage, noise level, battery level.	
Software	Support Windows 98/Me/NT/2000/XP/2003/Vista(SCO Unix/Linux/FreeBSD	
Noise level	Less than 45dB	
Operating temperature	0~45 deg C	
Humidity	10 a 90% non-condensing	
Weight	3.3 Kg	7 kg
Dimension	255*85*140mm	300*85*140mm

DESCRIPTION



Model: LiSmart-855



Model: LiSmart-1206

- 1.- Power ON button
- 2.- Display LCD
- 3.- USB charger
- 4.- 3 outlets back up (LiSmart-855) / 4 outlets back up (LiSmart-1206)
- 5.- 2 outlets surge only
- 6.- USB communication interface
- 7.- Breaker protection
- 8.- AC input

Test the UPS

To test UPS on battery back-up, switch off utility supply and observe 'back-up indicator' lights. Also your PC should continue to function normally.

1. Switching on

Press the switch for 3 seconds, the LED display output voltage, and then the UPS will be ready for operation.

2. Auto run

In DC mode, UPS discharges till battery run out and cut off, auto run when AC recovers.

3. Overload protection

When UPS is overload while operation, which is not solved by the user in time, it will cut off the output automatically after some time, then turn back to operation mode.

4. Low battery shut off

When the battery is about to be exhausted, UPS will shut down automatically to protect battery's life

5. Switching off

1) AC normal

UPS will cut off the output and goes to AC standby mode by pressing the switch for 3 seconds.

2) Backup

Press the switch for 3 seconds, the UPS will be turn off after a long beep.

TROUBLE SHOOTING

The trouble shooting chart covers most of the difficulties that you may encounter under normal working conditions.

For use the monitoring software, please download the user manual from our website: www.cdpenery.com.

If the UPS fails to operate properly, please review the following steps before calling the service center.

1. Is the UPS plugged into a correct working outlet?
2. Is the line voltage within the rating specified?
3. Is the fuse/circuit protector on back panel open?

Please submit the following information when you call for service.

1. Model No. & serial No.
2. Date of problem
3. Full description

Trouble shooting chart		
Symptoms	Possible cause	Action to take
Ups cannot be turned ON	UPS is not connecting to AC and overload	Please connect to AC and reduce the load
	The input fuse is burnt or breaker is off	Replace the fuse or reset the breaker, remove some load and check if the load is short-circuit or default
	AC Input voltage is too low	Please check the AC Input voltage
	The UPS is failure	Please send to the agency to repair
The buzzer beep every 8 seconds	UPS suddenly turns to battery mode in spite of utility line preset	Save the data promptly and shut down the operating system
The buzzer beep every second	Back up time less than 1 minute	Close the system and recharge again
Back up time less than specified	Overload	Please reduce the load
	Battery is not fully charged	Recharge the battery for at least 12 hours and retest the backup time
	Charging unit fault	Please send to the agency to repair

WARRANTY

CHICAGO DIGITAL POWER INC. warranties this product against defective materials or workmanship for one year from the date of original purchase) with the possibility to be extended to 2 years). Proof of purchase is required.

I. - To make this warranty valid proof of purchase is required. Bring the product to the original purchase place or to the nearest CDP service center. Make sure to bring also this warranty policy. For information about service center in your country please call the following numbers. (If your country is no here please send a mail to servicio@cdpups.com)

Bolivia: 800-100156

Salvador: 800-6773

Panama: 011-00800-2268611

Colombia: 01800-5181617

Honduras: 800-2561-6099

Peru: 0800-54674

Costa Rica: 800-4357237

Mexico: 001800-5148611

Dominic Republic: 1888-7514876

Venezuela: 0800-1627485

II. - Chicago Digital Power will repair or replace the product at its own criteria without a cost during the warranty period.

III. - Repair or replacement time should never exceed 30 days from the date that the unit is received at the CDP Service Center.

IV.-In case this warranty policy is a lost please a copy at the original purchase place.

Warranty Limitations

- a) This warranty does not include damage which arises from negligence, misuse or use not in accordance with the product instruction.
- b) When the product has been opened or serviced by a non-authorized service facility, has been altered or changed.
- c) Warranty is voided if utility wiring is reversed or lacks of ground.
- d) Warranty not valid for normal wear and tear.

(Please complete and submit this information, otherwise you will not have access to the guarantee)
(No guarantee will be offered if this format does not accompany the unit at the time of its return to the place of purchase)

Name: _____

Address: _____

Phone number: _____

e-mail: _____

Shop place: _____

Purchase address: _____

E-mail from the place of purchase: _____

Product AVR UPS No-Break Inverter

Model: _____

STORE SEAL

DATE OF DELIVERY



Enter this link to register your product.



Bolivia: 800-100156

Colombia: 01800-5181617

Costa Rica: 800-4357237

El Salvador: 800-6773

Honduras: 800-2561-6099

Mexico: 001800-5148611

Panama: 011-00800-2268611

Peru: 0800-54674

Dominic Republic: 1888-7514876

Venezuela: 0800-1627485